



Cabinet Office



Derbyshire ODF

Opportunity Development Fund

High Peak Workshop
2nd February 2023



Introductions

- Project Team
- Everyone in attendance

Workshop Objectives

1. Recap on the ODF opportunity
2. Look at how a data-driven approach can support a project's bid for funding
3. Provide an overview of potential projects in High Peak and identify how ODF could provide support
4. Identify 'next steps'

Overview of ODF Programme

- The North Midlands Region have successfully bid for support from **Opportunity Development Fund (ODF)**
- Focus on **capital pipeline development and collaborative priorities** in line with the Government's 'Levelling Up' agenda
- An OPE approach with **creative and collaborative thinking about estates strategies and capital plans** to address inequalities across key thematic areas of Housing, Education, Health and Regeneration

General Outputs across the Public Sector

- 1** Better understanding between public sector organisations of their physical presence (estate & service)
- 2** Greater understanding of local needs and opportunities, especially levels of inequality
- 3** Establishment/enhancement of network between service providers
- 4** Sharing of knowledge between public sector organisations
- 5** Enabling of more integrated health and social care estate, focusing on areas with highest inequalities in health, education, and housing

Specific Outputs for each Project/Opportunity

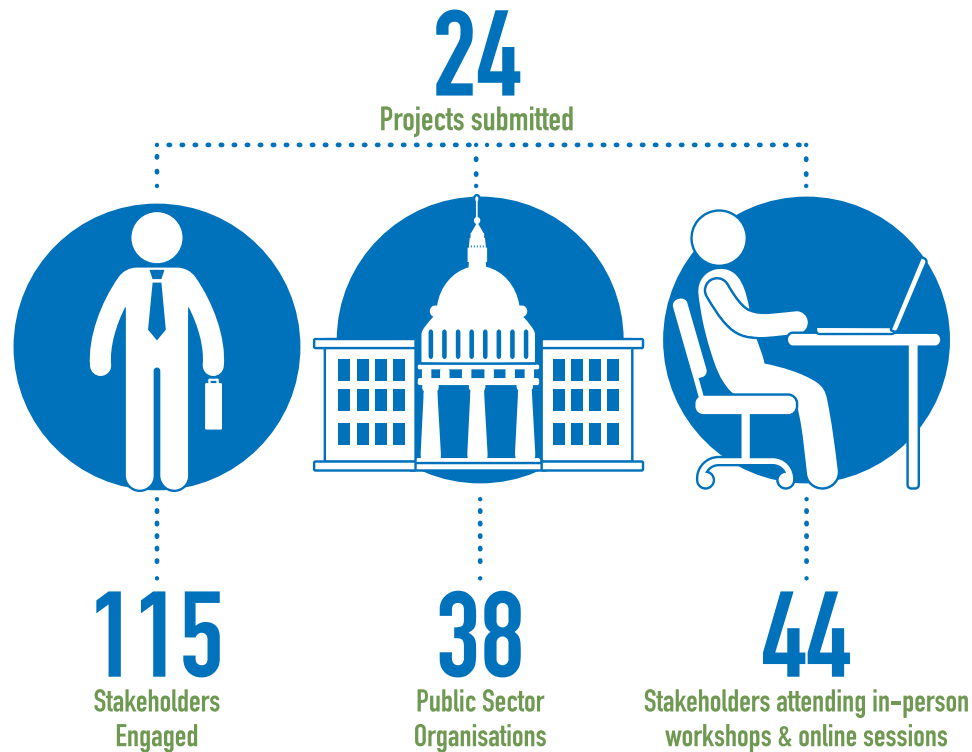
- 1** Identification of specific project/opportunity
- 2** Potential project partners/key stakeholders
- 3** What project is anticipated to deliver (assessed against inequalities)
- 4** How project is to be developed/taken forward
- 5** Key dates/timescale for delivery
- 6** Indicative levels of investment required

Networks



Engagements across North Midlands

The numbers to date...



Derbyshire ODF Project Summary

- 14 projects
- Key theme around community hubs and service integration
- All project proposals are feasibility studies
- Generally to explore service demand, which services could suitably collocate and space requirements

Derbyshire ODF Project List (1 of 2)

1. Florence Nightingale Community Services Hub
2. Derby Community Hub
3. Amber Valley Community Hub
4. Erewash Community Hub
5. Staveley Health Hub
6. Swadlincote UTC/Wider Hub.
7. Swadlincote Leisure Centre / Civic Hub

Derbyshire ODF Project List (2 of 2)

8. Bolsover Town Centre Regeneration Phase 1 (Levelling Up)
9. Bolsover Town Centre Regeneration Phase 2
10. Bolsover Connectivity (physical and digital)
11. Bolsover Further Education
12. Whitworth Hospital
13. St Oswalds Hospital
14. Chesterfield Health Hub

Building the case through Data-Driven approach

https://youtu.be/_7QB_6TI604

Discussion

Discussion Questions

1. How can we benefit from a wider collaborative approach?
2. Are there any projects or opportunities you would like to see included?
3. How do we use this information to benefit from external funding opportunities?

What can you do to get involved?

- Details of **existing capital projects** (healthcare, housing, education, regeneration).
- **Identify planned capital projects in those areas of greatest need.** Particularly those which are vacant / under utilised or in need of investment.
- Provide **feedback** on the data shown today.
- Provide **feedback and insight** on other data sets
- **Supply your project information.** Proforma (to be shared) which is based on previous OPE calls for projects information. Enabling responses to funding opportunities to be more agile.

Next steps

- Final call to submit projects via the micro-site form
- Creation of a pipeline list of projects which reflect funding priorities and opportunities
- Additional works to support subsequent development of projects and opportunities, including further partner collaboration where appropriate
- Data mapped to support projects in submitting future bids

Timescales

- **By 3rd Feb** – engagement sessions complete
- **By the end Feb** – share initial recommendations through a collaborative filtering process
- **By the end of March** – progress with a recommended pipeline of projects