



Cabinet Office

SOUTH YORKSHIRE

SYMCA



MAYORAL
COMBINED
AUTHORITY

South Yorkshire OPE Development Fund

Tuesday 02 August 2022
Teams meeting

Why we are here today

- **Introductions**
- **Purpose of this exercise**
 - SYMCA have successfully bid for One Public Estate (OPE) Opportunity Development Fund.
 - Importance of **capital pipeline development and collaborative priorities** in line with the Government's 'levelling up' agenda.
 - A **One Public Estate approach** with creative and collaborative thinking about estates strategies and capital plans (supported by Fuller Report).

Opportunity Development Fund Objectives

- 1 Using data sets to highlight hotspots for inequalities in Healthcare, Housing, Education & Regeneration.
- 2 Objective review of the SYMCA's current programme and opportunities.
- 3 Collaborative thinking between public sector partners to identify priorities and potential future projects.
- 4 Creation of a pipeline list which enables agile responses to funding opportunities.

Activity so far

- 1 Held four in person workshops in Doncaster, Sheffield, Rotherham and Barnsley.
- 2 Attendees from across Health, Housing and Education.
- 3 Participants are now reviewing the micro-site and submitting their existing capital projects and new ideas for potential funding.

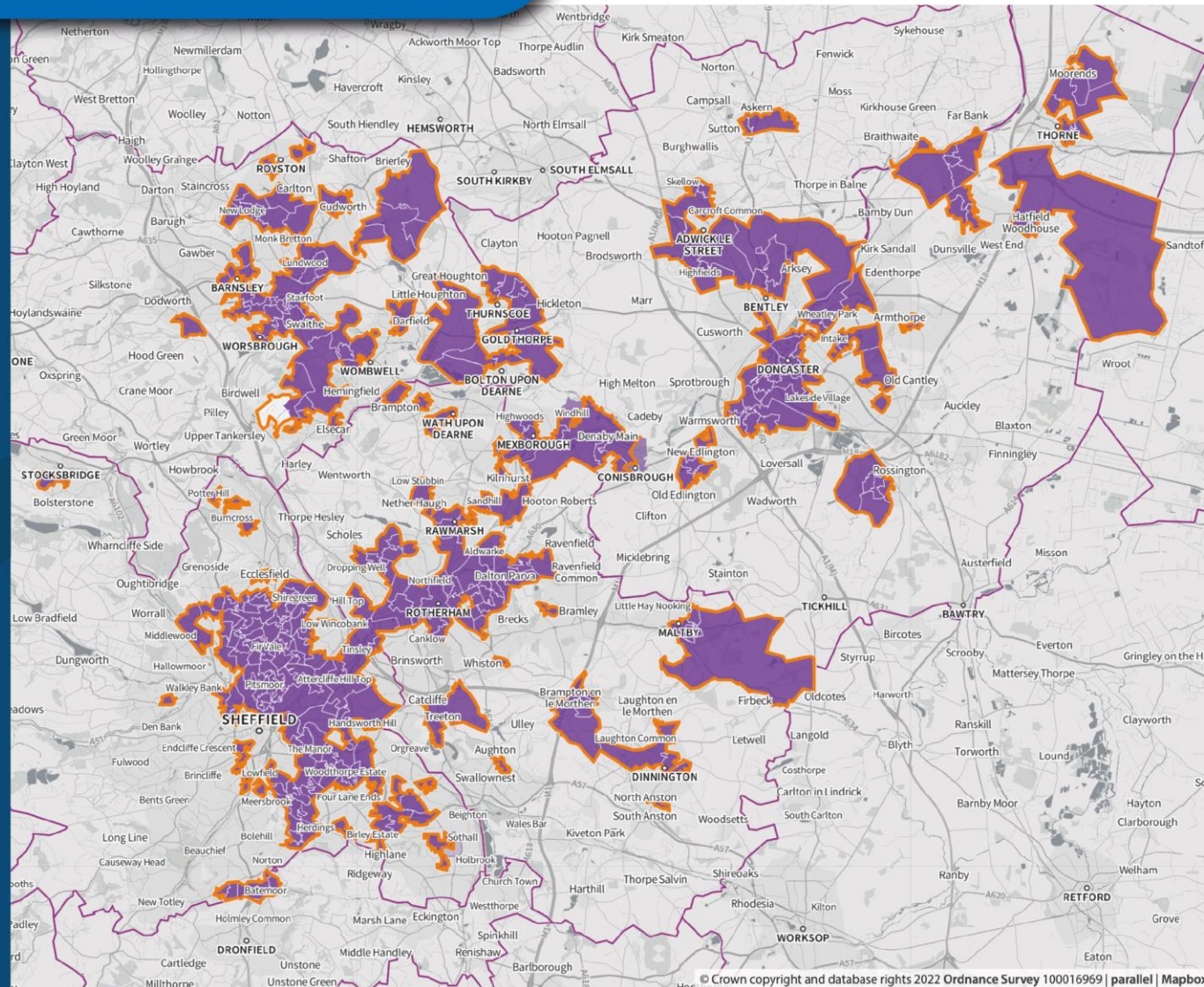
Identifying hotspots through data

By using SHAPE key data sets we have started the identification of hotspots for focussing potential investment to get the most benefits where most needed.

The next slides show South Yorkshire as a whole to give an overview. The detailed data for each area is held on the micro-site.

Overall IMD deprivation

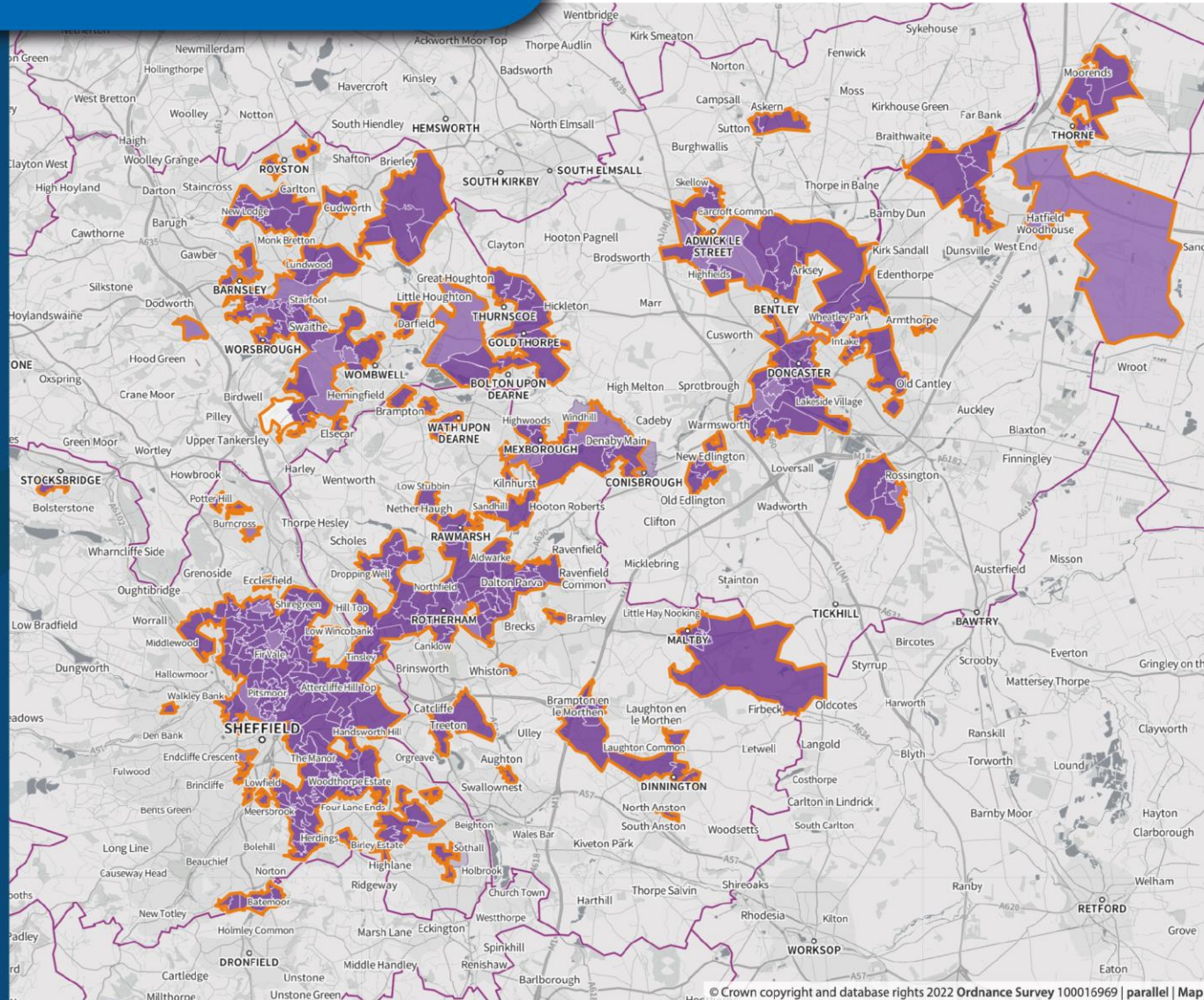
This image highlights all areas within South Yorkshire's that fall under the top 20% IMD. This indicates high levels of inequalities across the ten domains that make up the IMD.



Income deprivation

This image shows the variance in income deprivation within the top 20% IMD areas.

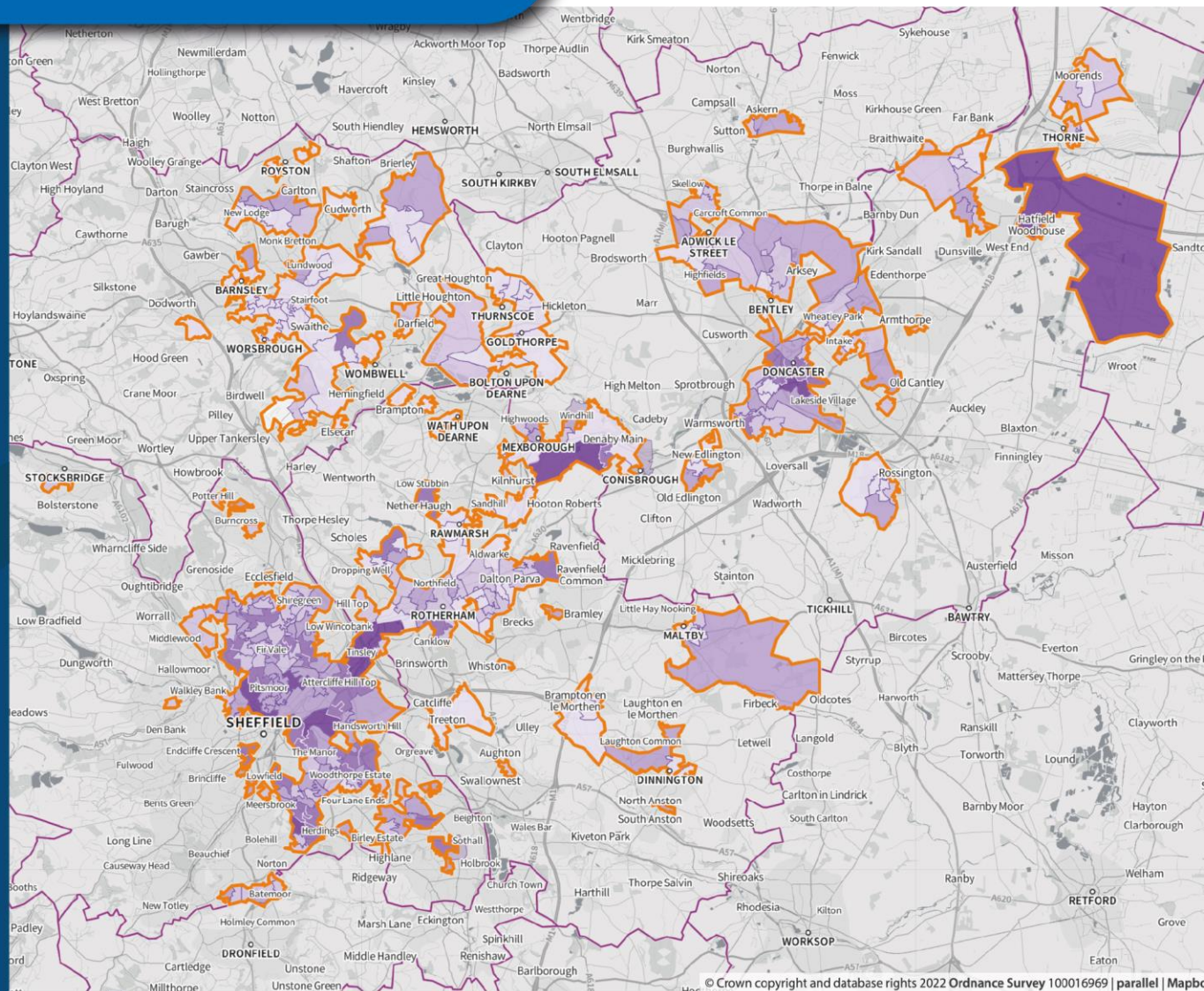
The deeper purple represents areas with greater inequalities in income deprivation.



Barriers to housing and services deprivation

Barriers to housing and services within South Yorkshire's top 20% IMD are very low in relation to the England average, with the majority of areas falling within the lowest quintile.

The deeper purple represents areas with greater inequalities in income deprivation.



What can you do to get involved?

- Provide **feedback** on the data held on the micro-site
- Provide **feedback and insight** on other data sets (e.g. language / qualifications)
- Details of **existing capital projects** (healthcare, housing, education, regeneration)
- **Identify planned capital projects in those areas of greatest need.** Particularly those which are vacant / under utilised or in need of investment
- **Supply your project information.** Proforma (to be shared) which is based on previous OPE calls for projects information. Enabling responses to funding opportunities to be more agile.

Next steps

By mid-August

- Provision of any additional data sets or identified hotspots.
- Provision of project information to create pipeline list.
- Agree method of prioritisation so that pipeline list can be categorised.

Next steps

By September

- Share initial findings / recommendations in second workshop on 13th September 2pm to 4pm in Doncaster.
- Agree prioritised pipeline list and sharing of project information for funding bids.

Longer term vision

- Provide a **prioritised pipeline** list to SYMCA which is backed up with evidential data.
- **Establish and nurture** connections and opportunities for collaboration.
- Continue to **manage and monitor** the pipeline list. Not a stand alone exercise.
- Potential to **identify new projects in priority areas** which would benefit from development funding.

Questions, reflections, feedback on today

