



Cabinet Office

SOUTH YORKSHIRE

SYMCA



MAYORAL
COMBINED
AUTHORITY

South Yorkshire OPE Development Fund

Workshop: Friday 15 July 2022
Sheffield

Why we are here today

- **Introductions**
- **Purpose of this exercise**
 - SYMCA have successfully bid for One Public Estate (OPE) Opportunity Development Fund.
 - Importance of **capital pipeline development and collaborative priorities** in line with the Government's 'levelling up' agenda.
 - A **One Public Estate approach** with creative and collaborative thinking about estates strategies and capital plans (supported by Fuller Report).

Opportunity Development Fund Objectives

- 1 Using data sets to highlight hotspots for inequalities in Healthcare, Housing, Education & Regeneration.
- 2 Objective review of the SYMCA's current programme and opportunities.
- 3 Collaborative thinking between public sector partners to identify priorities and potential future projects.
- 4 Creation of a pipeline list which enables agile responses to funding opportunities.

Identifying hotspots through data

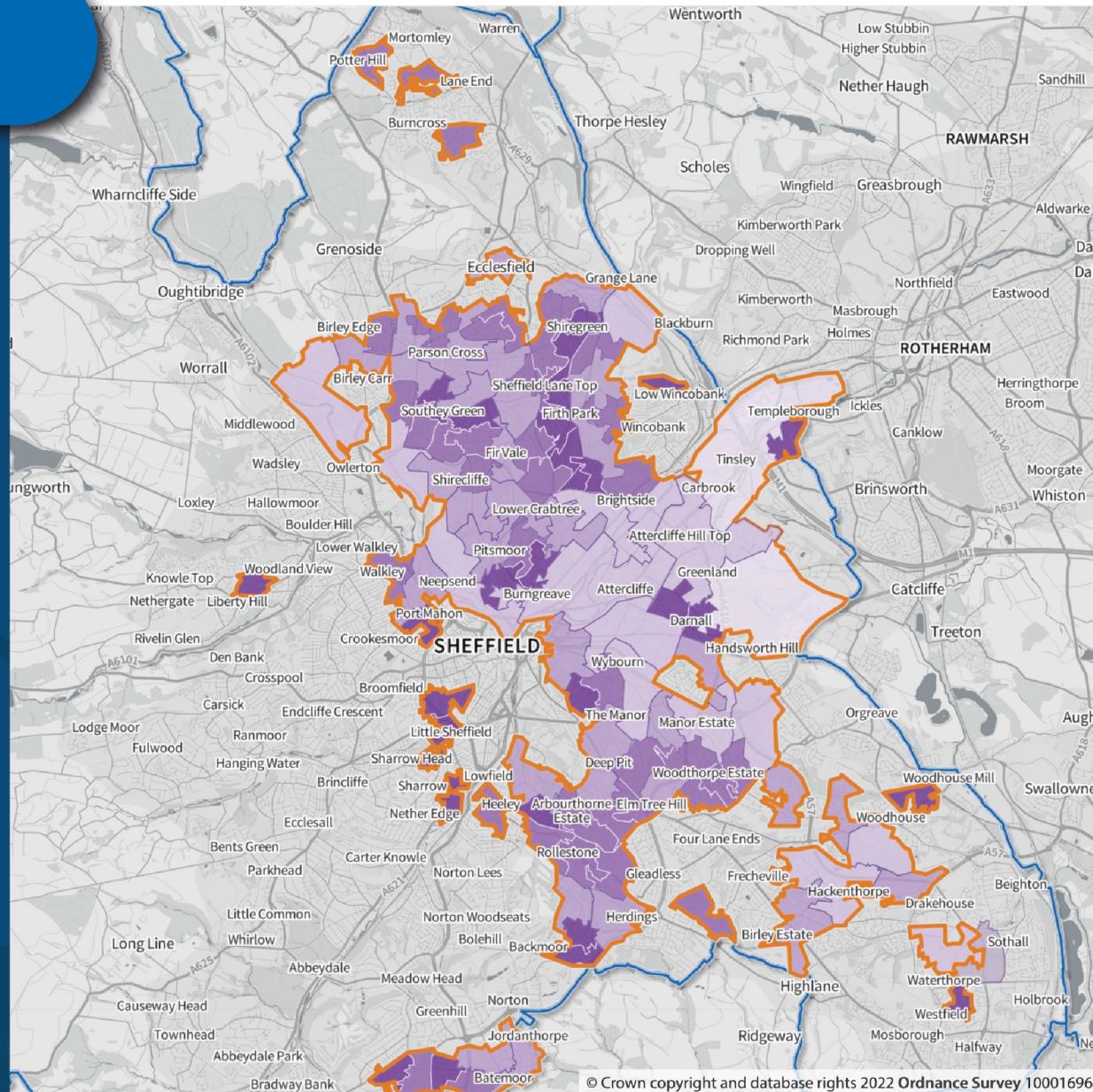
By using SHAPE key data sets we have started the identification of hotspots for focussing potential investment to get the most benefits where most needed.

Population density and age profile

The orange boundary areas highlight those areas that fall within the top 20% IMD within Sheffield.

The total population of those areas is 206,060.

The darker the purple the higher the population density.



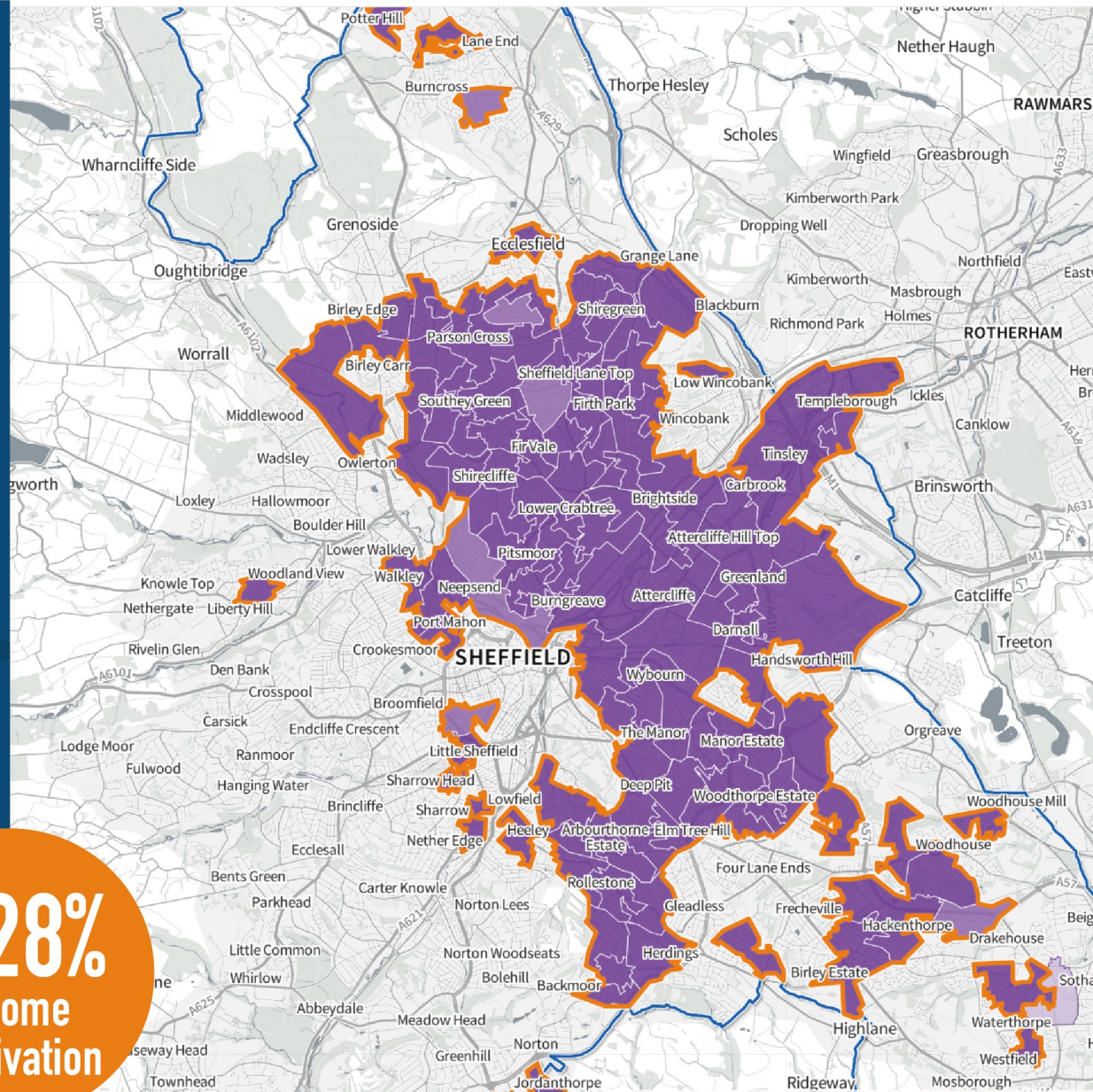
Income deprivation

Income deprivation in Sheffield is more than double than the UK average – score of 0.28% against the UK average of 0.13%.

This image show the variance in income deprivation within the top 20% IMD areas.

The deeper purple represents areas with greater inequalities in income deprivation.

0.28%
income
deprivation



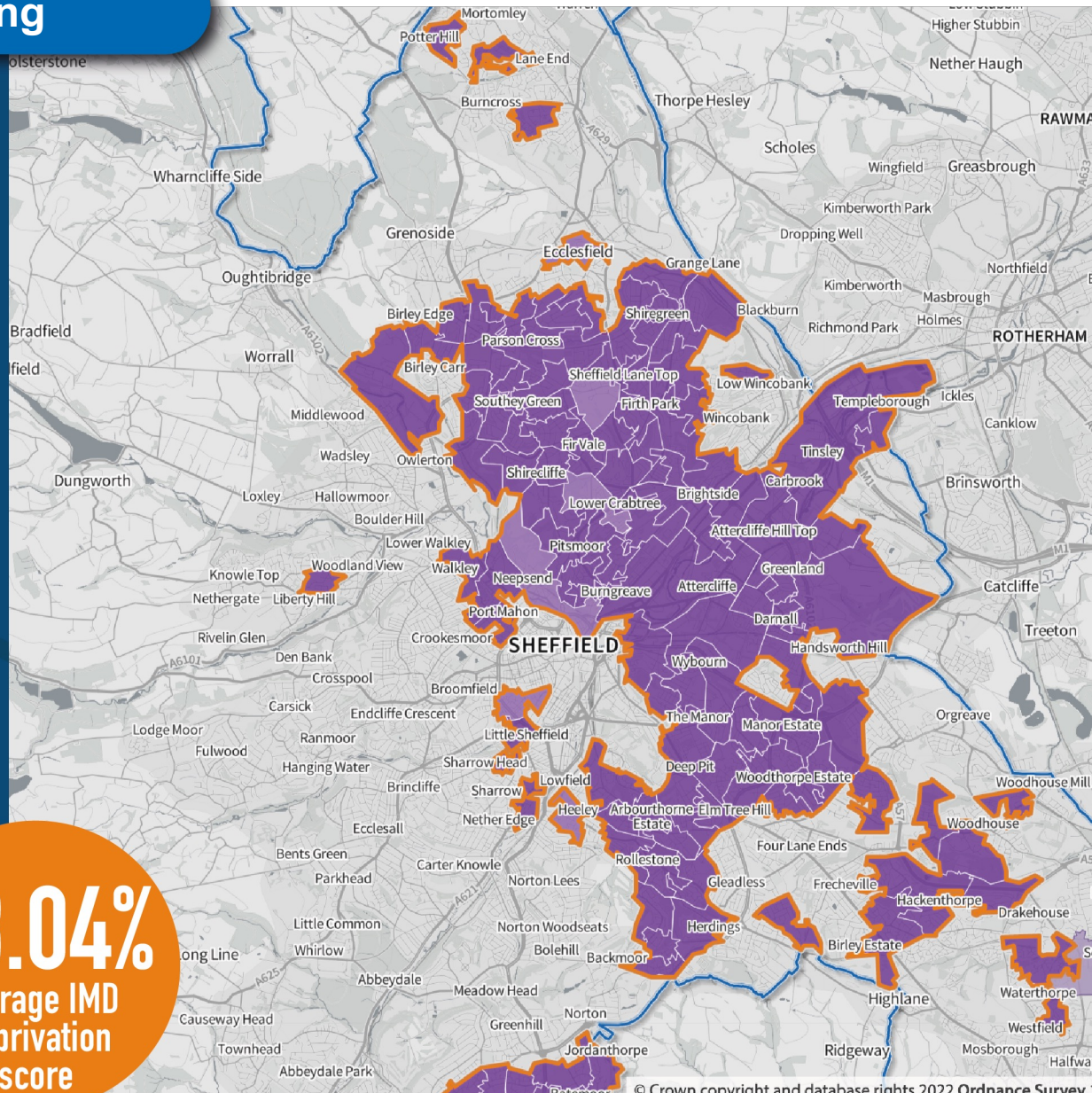
Education, skills and training

This area is one of the most significant in terms of deprivation.

The deep purple areas indicate exceptionally high levels of deprivation within Education, Skills and Training with the average score of 58.04% compared to a UK average of 21.69%.

With the exception of a few localised areas the levels of deprivation in this field are relatively equalised across all of the top 20% IMD areas. This includes Whitehall which is not visible on this static image.

58.04%
average IMD
deprivation
score

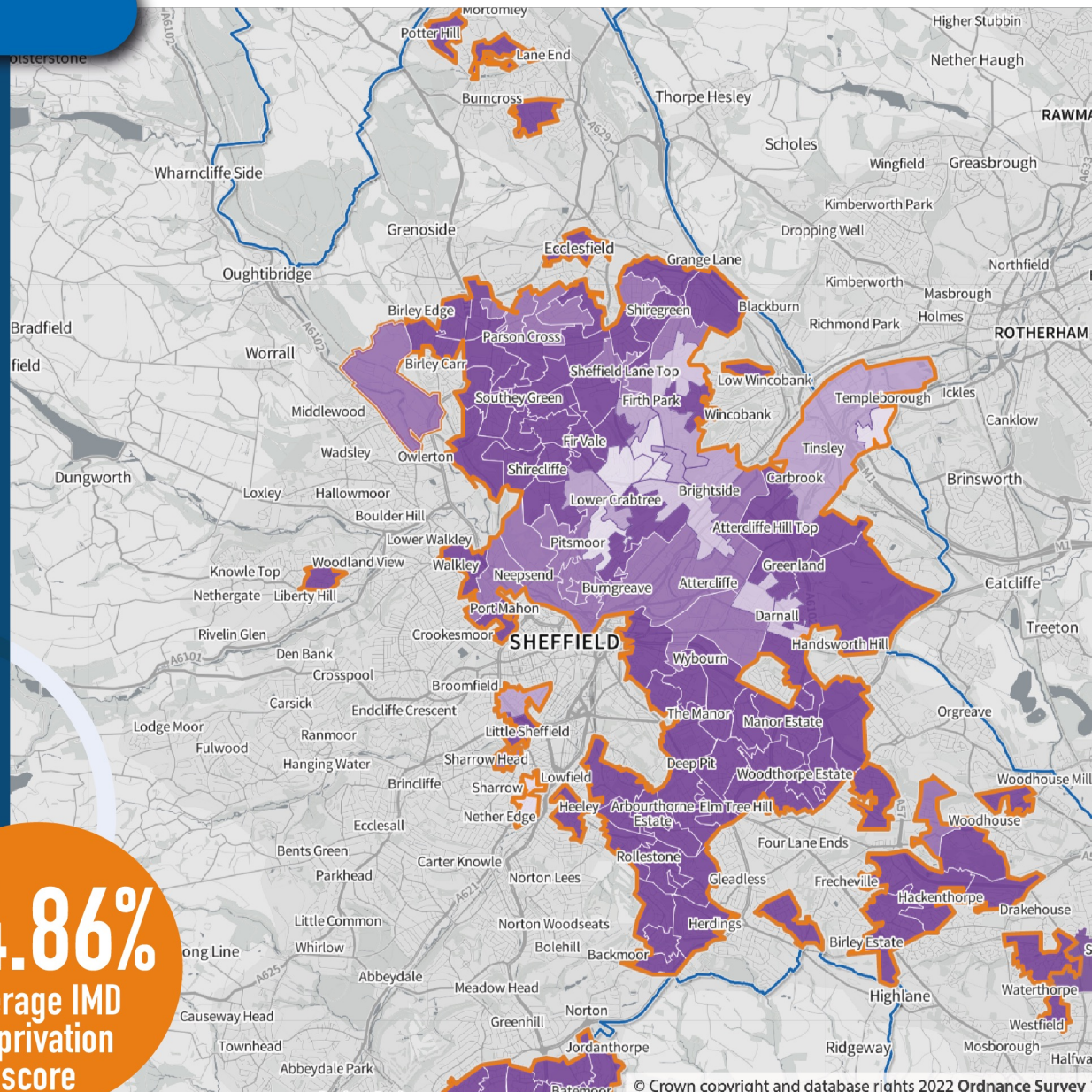


Wellbeing Acorn indicator

This image shows the locations of people with health challenges.

The score within the top 20% IMD areas is 44.86% compared to and England average of 16.22%, therefore this shows the most in demand areas for health services as a whole.

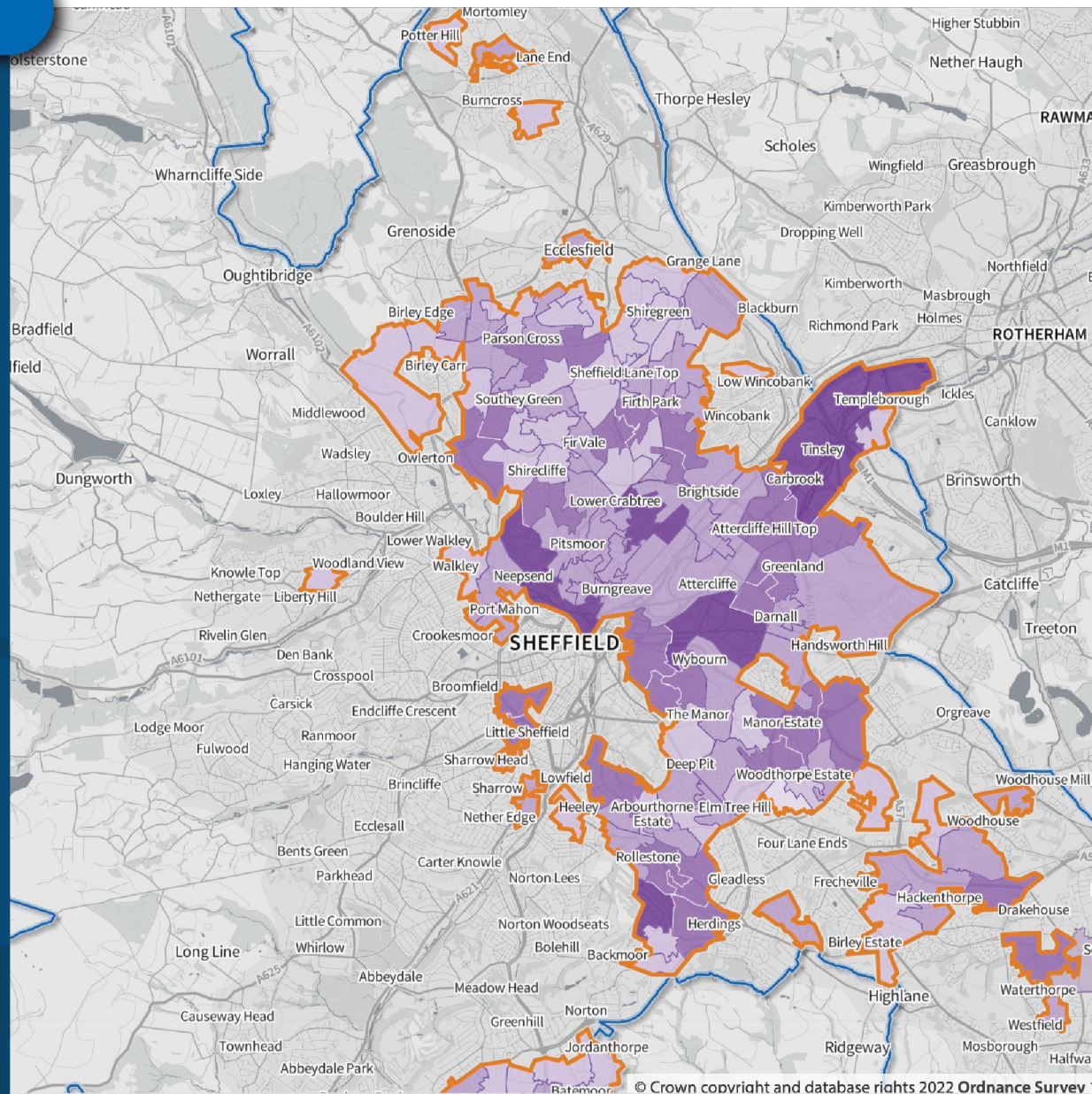
44.86%
average IMD
deprivation
score



Housing deprivation

The barriers to housing and services across the top 20% IMD areas within Sheffield show a greater variation of need.

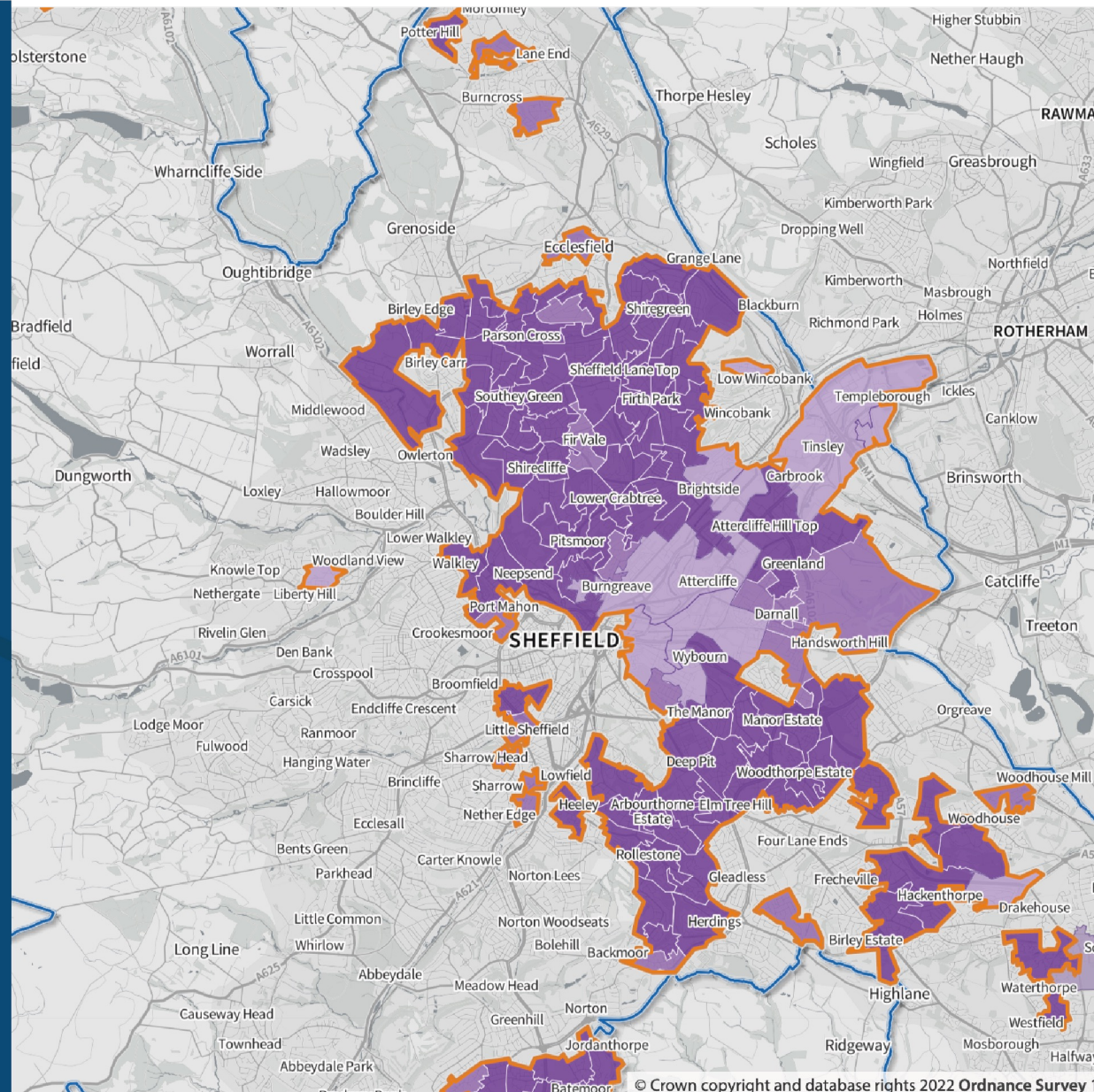
The darker areas represent the greater need for housing and services.



Crime deprivation

Crime deprivation is highlighted to show the more affected areas.

There is a variation in the levels of crime between localised areas – the deeper the colour the higher the percentage.



What can you do to get involved?

- Provide **feedback** on the data today.
- Provide **feedback and insight** on other data sets (e.g. language / qualifications).
- Details of **existing capital projects** (healthcare, housing, education, regeneration).
- **Identify planned capital projects in those areas of greatest need.** Particularly those which are vacant / under utilised or in need of investment
- **Supply your project information.** Proforma (to be shared) which is based on previous OPE calls for projects information. Enabling responses to funding opportunities to be more agile.

Next steps

By mid-August

- Provision of any additional data sets or identified hotspots.
- Provision of project information to create pipeline list.
- Agree method of prioritisation so that pipeline list can be categorised.

Next steps

By September

- Share initial findings / recommendations in second round of workshops in September.
- Agree prioritised pipeline list and sharing of project information for funding bids.

Longer term vision

- Provide a **prioritised pipeline** list to SYMCA which is backed up with evidential data.
- **Establish and nurture** connections and opportunities for collaboration.
- Continue to **manage and monitor** the pipeline list. Not a stand alone exercise.
- Potential to **identify new projects in priority areas** which would benefit from development funding.

Questions, reflections, feedback on today

