

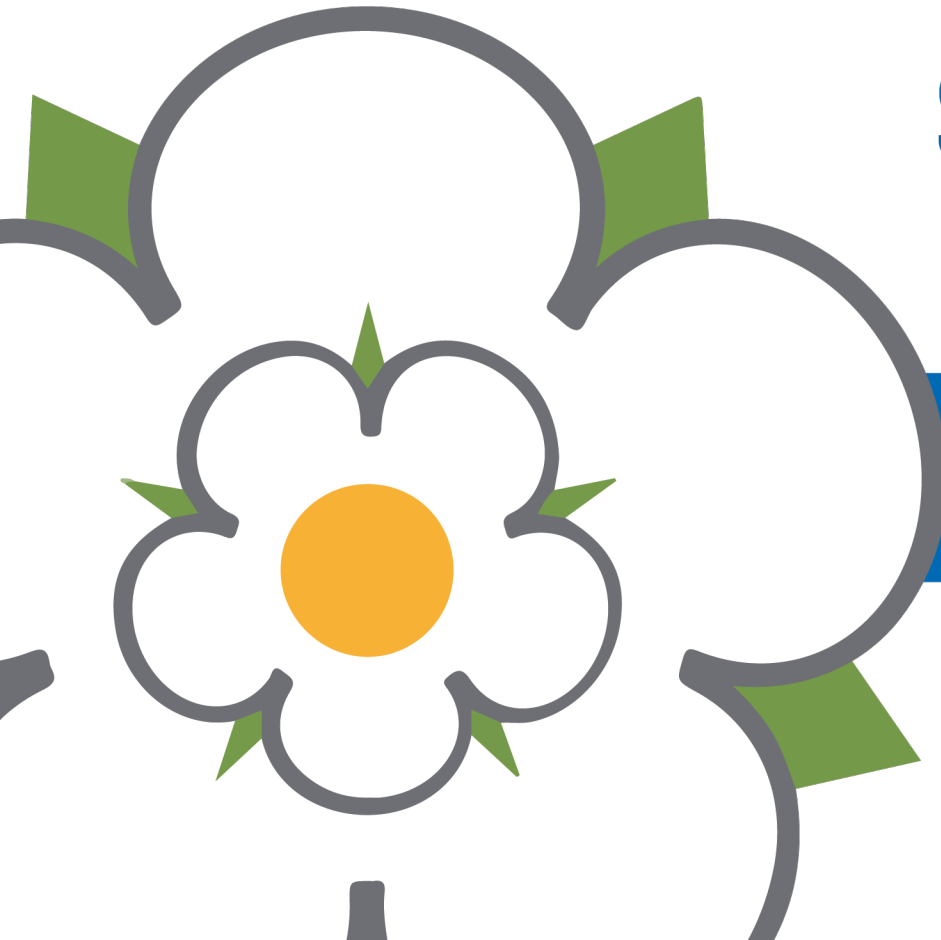


Cabinet Office



South Yorkshire OPE Development Fund

Rotherham workshop
Wednesday 20 July 2022



Why we are here today

- **Introductions**
- **Purpose of this exercise**
 - SYMCA have successfully bid for One Public Estate (OPE) Opportunity Development Fund.
 - Importance of **capital pipeline development and collaborative priorities** in line with the Government's 'levelling up' agenda.
 - A **One Public Estate approach** with creative and collaborative thinking about estates strategies and capital plans (supported by Fuller Report).

Opportunity Development Fund Objectives

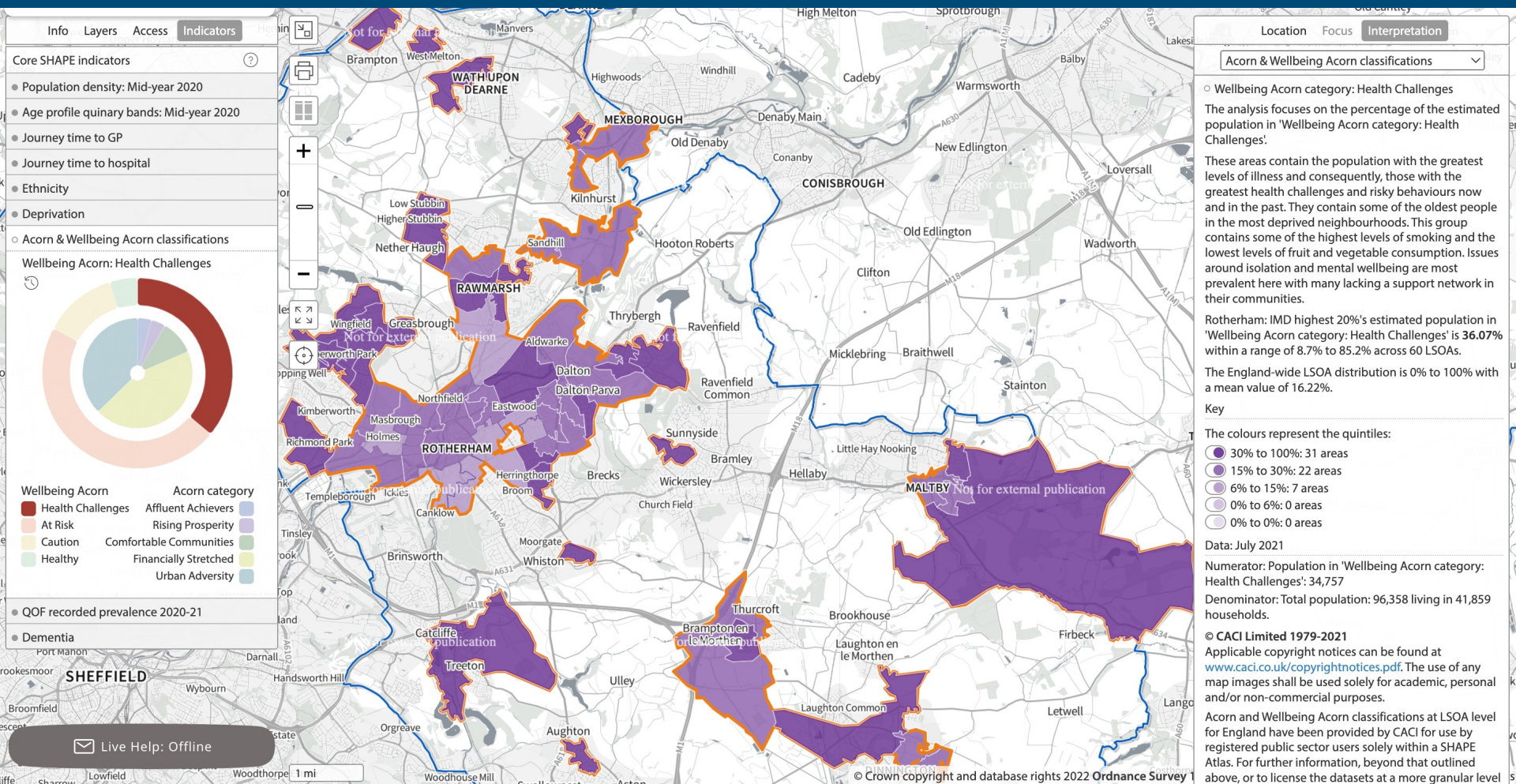
- 1 Using data sets to highlight hotspots for inequalities in Healthcare, Housing, Education & Regeneration.
- 2 Objective review of the SYMCA's current programme and opportunities.
- 3 Collaborative thinking between public sector partners to identify priorities and potential future projects.
- 4 Creation of a pipeline list which enables agile responses to funding opportunities.

Identifying hotspots through data

By using SHAPE key data sets we have started the identification of hotspots for focussing potential investment to get the most benefits where most needed.

Overall IMD Deprivation

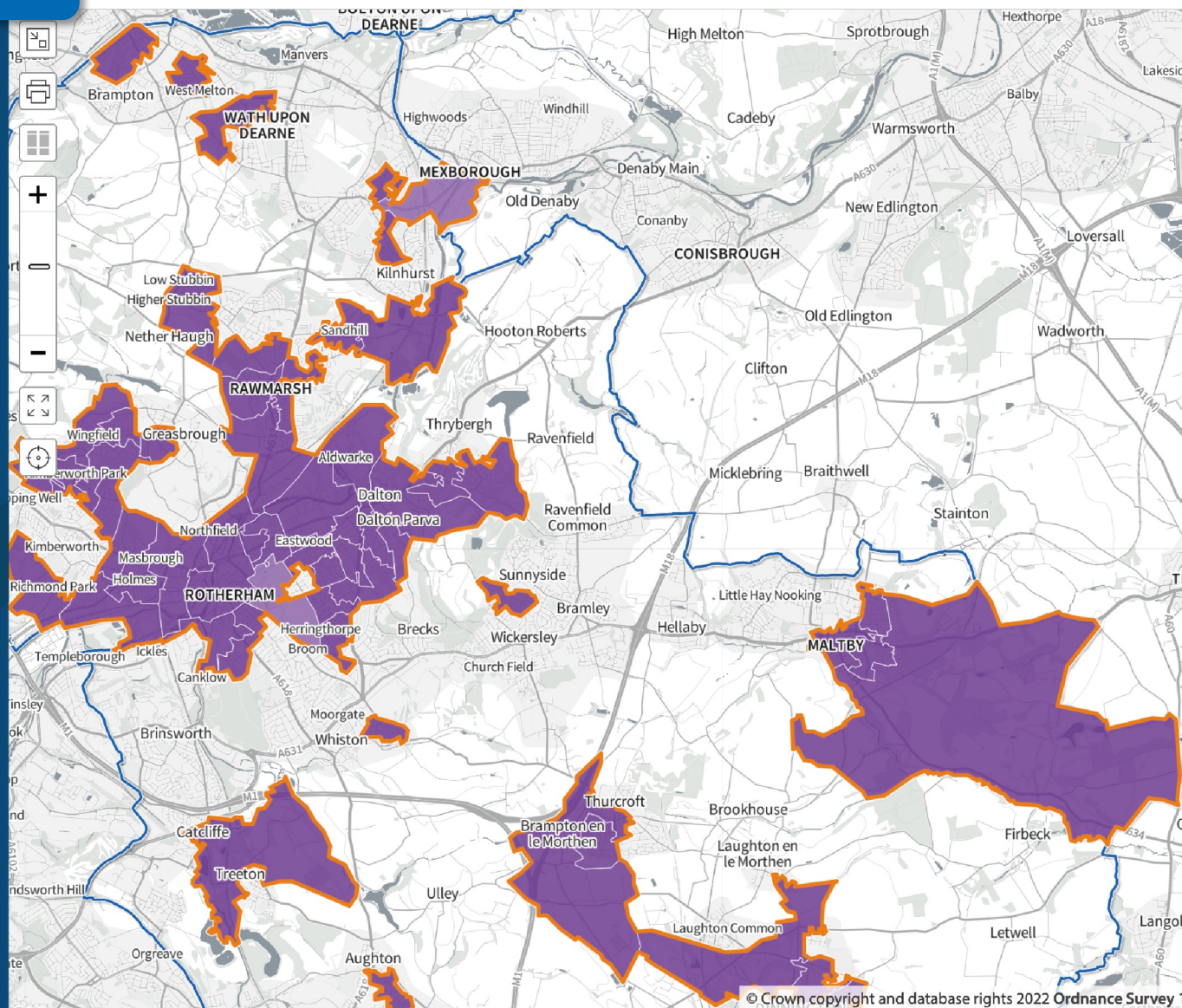
This image highlights that all areas within Rotherham's top 20% IMD fall within the highest banding of deprivation, indicating high levels of inequalities across the seven domains that make up the IMD. The weighting of each domain is detailed in the panel on the right of the map.



Income deprivation

Income deprivation within Rotherham's top 20% IMD areas is very high, with a score of 0.29 – more than double the mean England average score of 0.13.

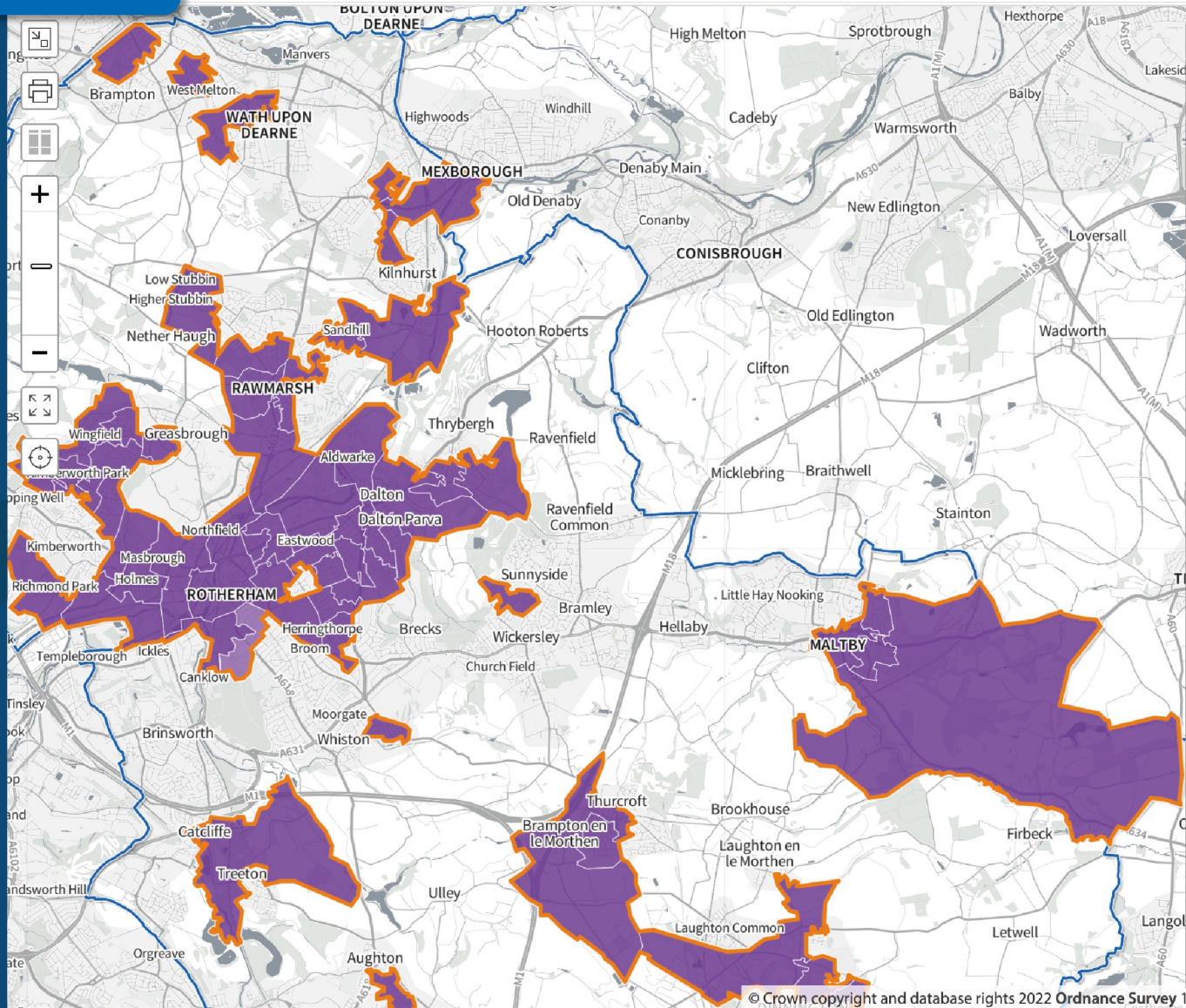
All areas apart from two fall within the upper quintile, highlighting that most areas have very high levels of income deprivation.



Employment deprivation

Rotherham top 20% IMD areas have an average score of **0.23** compared to an England mean average of **0.1**.

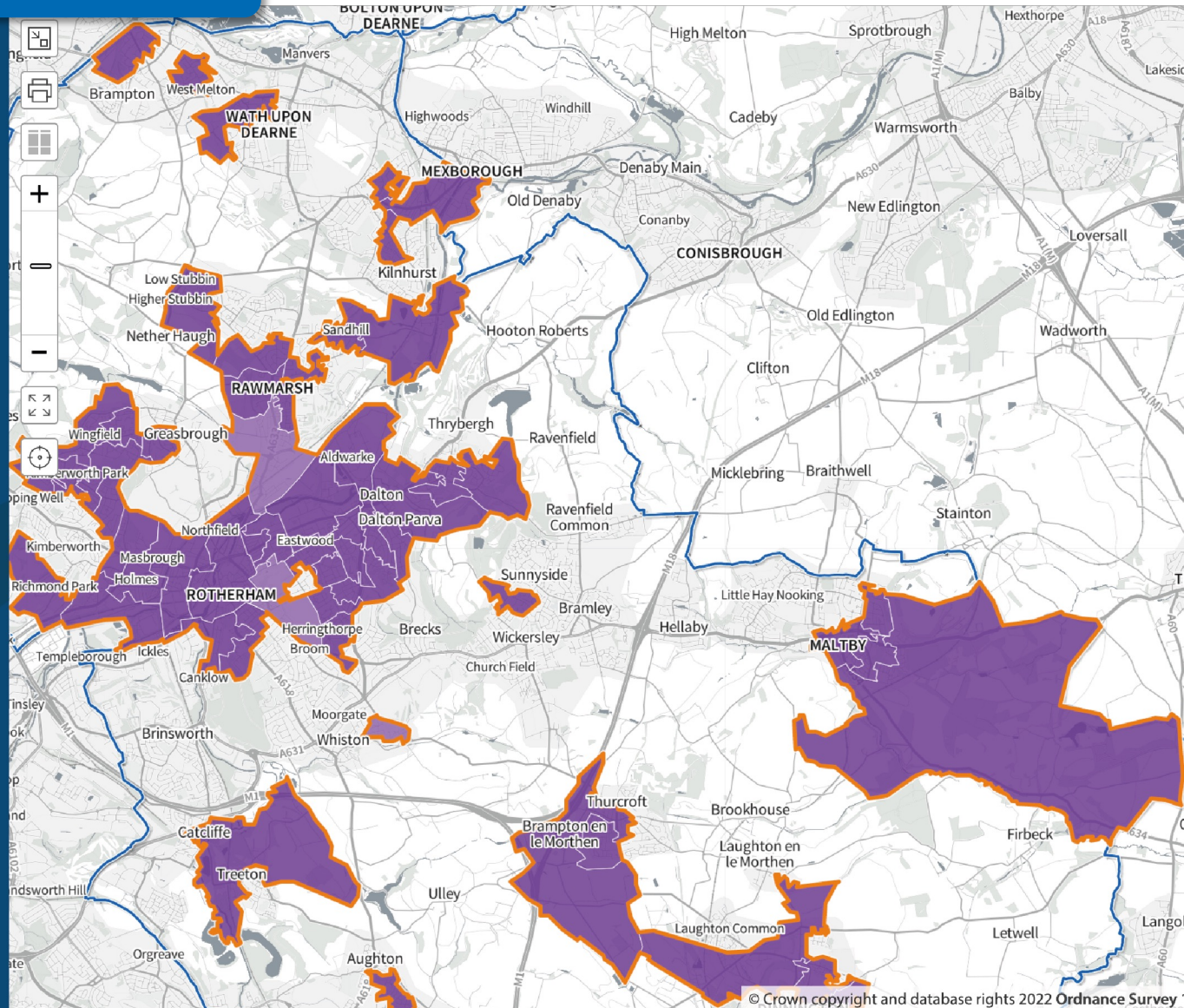
All areas apart from one fall within the upper quintile of employment deprivation against the England average.



Education, skills and training

Education, skills and training deprivation within Rotherham's top 20% IMD areas falls within the upper quintile, with a score of **59.78** against an England average of **21.69**.

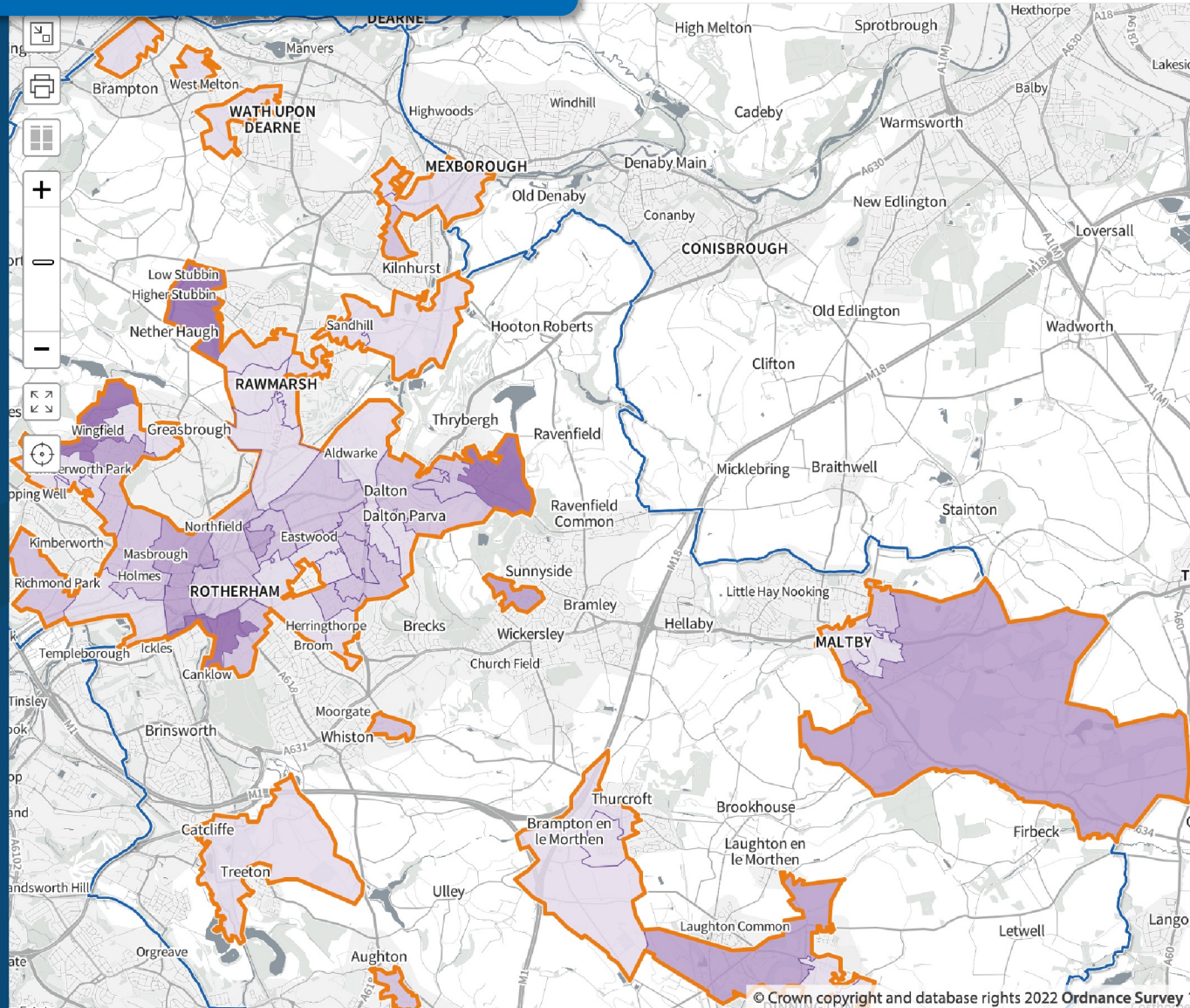
56 out of 59 areas fall within the upper quintile of education, skills and training deprivation inequality.



Barriers to housing and services deprivation

Barriers to housing and services within Rotherham's top 20% IMD are low in relation to the England average.

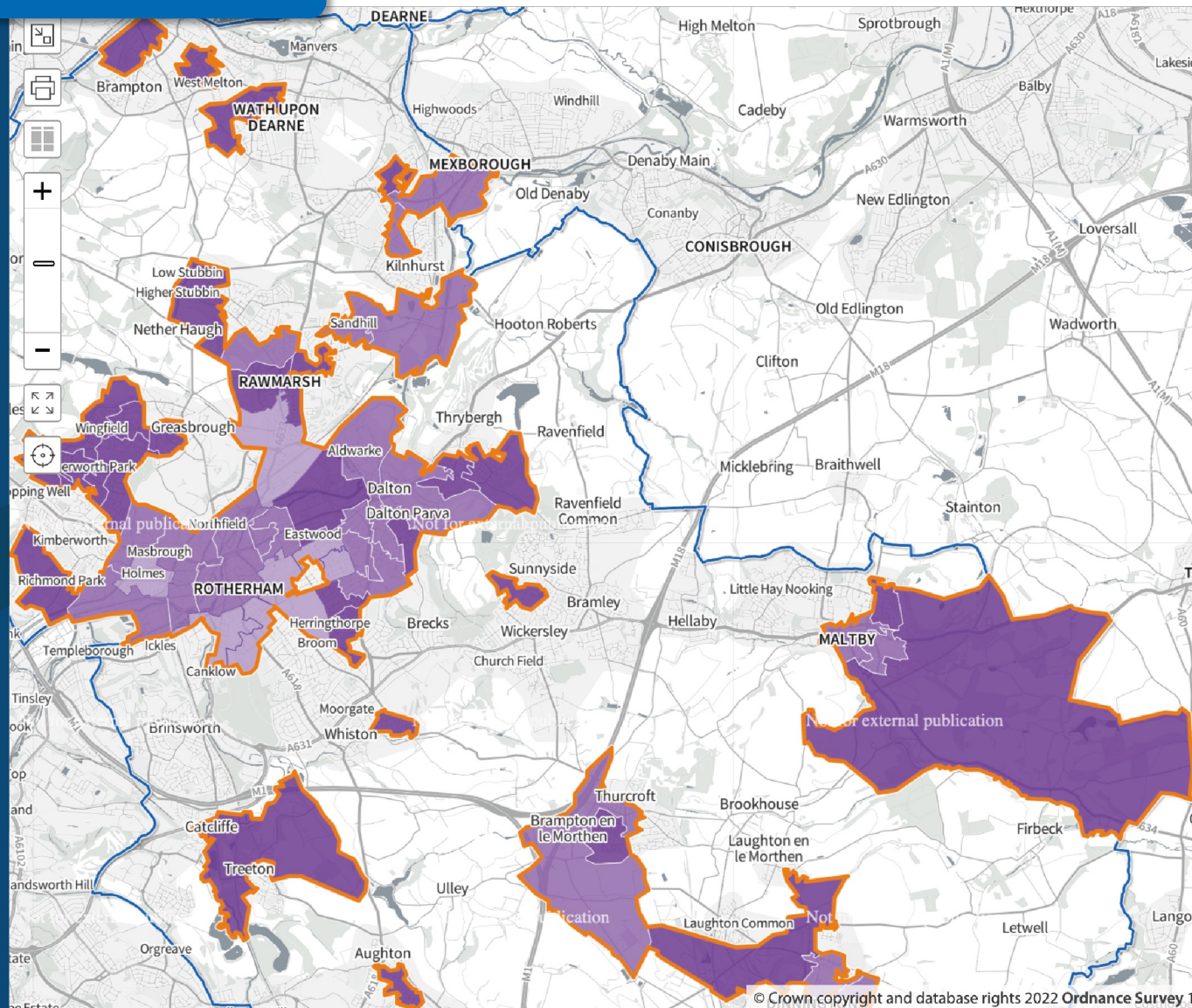
The majority of areas fall within the lowest quintile demonstrating lower inequalities in this domain for the whole area.



Wellbeing Acorn – all bandings

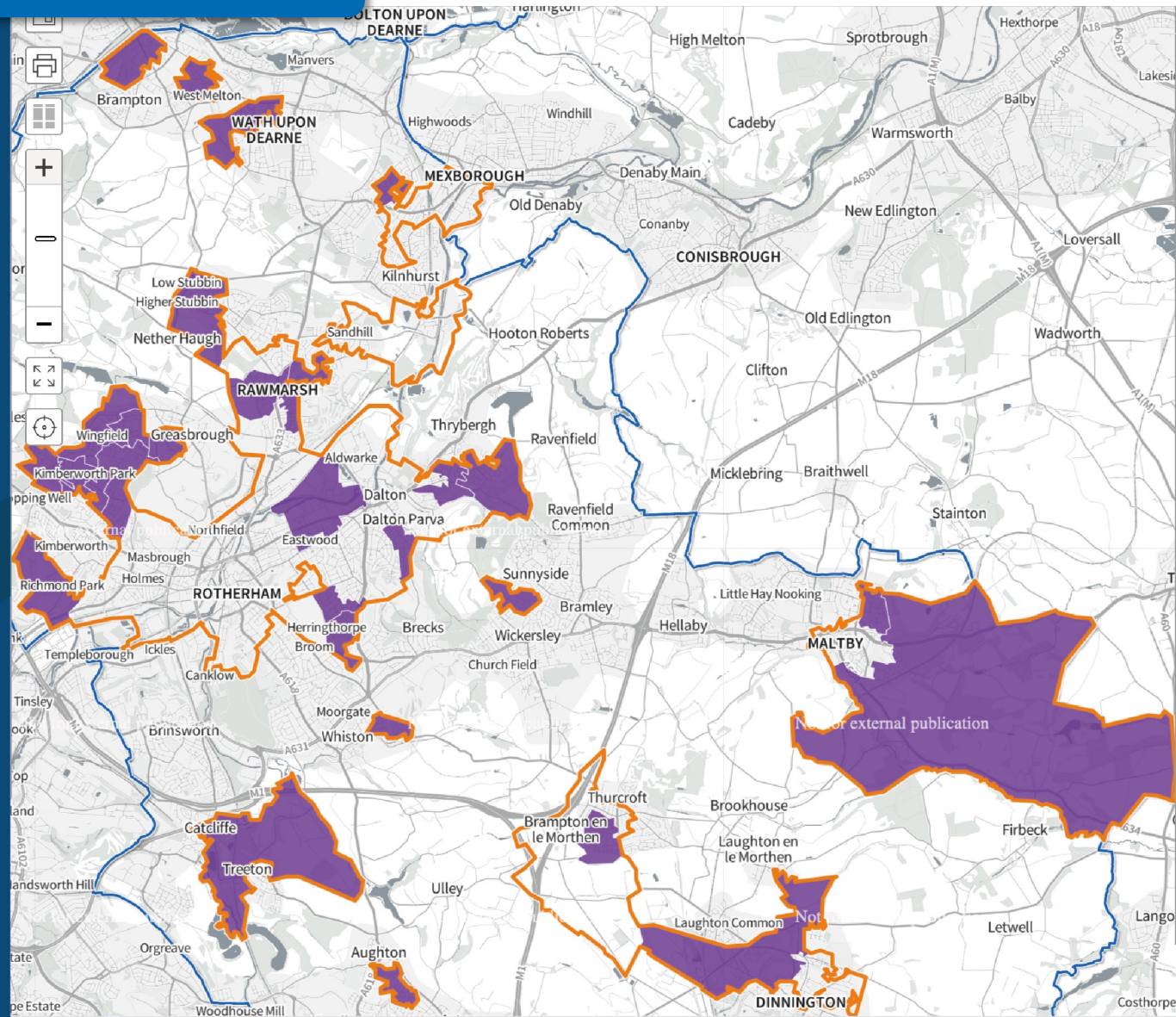
The Wellbeing Acorn data for Rotherham's top 20% IMD areas demonstrates that there are no areas that fall within the lower two quintiles.

The deeper purple areas represent where the population have greater overall health challenges.



Wellbeing Acorn – upper quintile

This image shows the location of the 31 areas with populations that fall within the upper quintile for health challenges and have the highest levels of inequality in overall health conditions.



What can you do to get involved?

- Provide **feedback** on the data today
- Provide **feedback and insight** on other data sets (e.g. language / qualifications)
- Details of **existing capital projects** (healthcare, housing, education, regeneration)
- **Identify planned capital projects in those areas of greatest need.** Particularly those which are vacant / under utilised or in need of investment
- **Supply your project information.** Proforma (to be shared) which is based on previous OPE calls for projects information. Enabling responses to funding opportunities to be more agile.

Next steps

By mid-August

- Provision of any additional data sets or identified hotspots.
- Provision of project information to create pipeline list.
- Agree method of prioritisation so that pipeline list can be categorised.

Next steps

By September

- Share initial findings / recommendations in second round of workshops in September.
- Agree prioritised pipeline list and sharing of project information for funding bids.

Longer term vision

- Provide a **prioritised pipeline** list to SYMCA which is backed up with evidential data.
- **Establish and nurture** connections and opportunities for collaboration.
- Continue to **manage and monitor** the pipeline list. Not a stand alone exercise.
- Potential to **identify new projects in priority areas** which would benefit from development funding.

Questions, reflections, feedback on today

